

# 您設計產品時的好朋友！



Forum: [程式軟體與開發工具](#)

Topic: MPLAB X IPE 無法使用 PicKit3 燒錄 PIC30F6010A 程式

Subject: Re: MPLAB X IPE 無法使用 PicKit3 燒錄 PIC30F6010A 程式

作者: austin1211

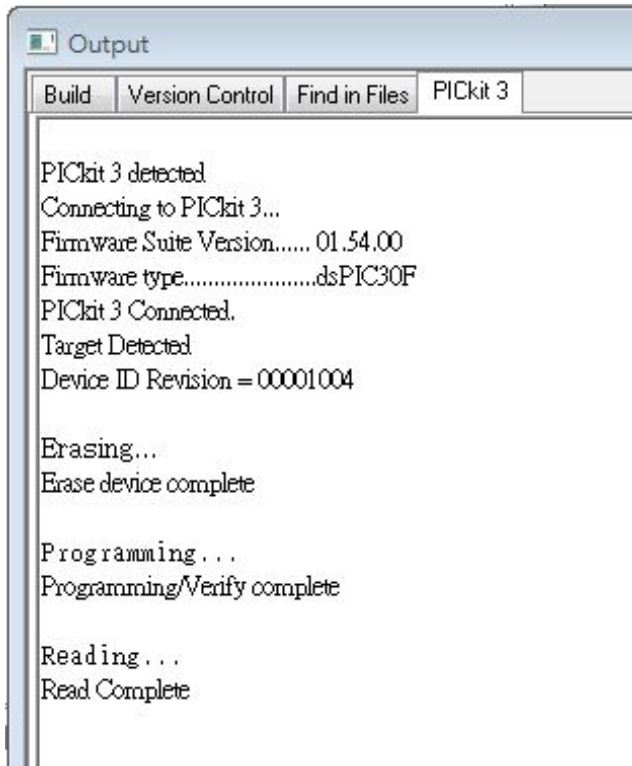
2019年07月10日 10:23:07

版主您好，  
感謝您回覆。

1. 我Import 到 MPLAB IDE V8.92 的 Hex Files 是有包含 Configuration Bits 的設定訊息。
2. 我有使用 MPLAB IDE V8.92 Export 的 Hex Files ，然後使用 IPE 燒錄，也是一樣出現錯誤訊息。
3. 我有關閉 IPE 下 --> Target Memory Views --> Configuration Bits ，之中相關 Boot Segment 選項，，也是一樣出現錯誤訊息。

附加檔案：

擷取m8R.JPG(29.55 KB)



Ipe0710-1.JPG (171.56 KB)

Operate

Device and Tool Selection

Family:

Device:

Tool:

Results

Checksum:

Pass Count:

Fail Count:

---

Output - IPE Configuration Bits

Address	Name	Value	Field	Option	Category	Setting
F80000	FOSC	8703	FOSFPR	FRC_ELLI6	Oscillator	FRC w/PLL 16x
			FCKSMEN	CSW_FSCM_OFF	Clock Switching and Monitor	Sw Disabled, Mon Disabled
F80002	FWDT	8039	FWPSB	WDTPSB_10	WDT Prescaler B	1:10
			FWPSA	WDTPSA_512	WDT Prescaler A	1:512
			WDT	WDT_ON	Watchdog Timer	Enabled
F80004	FBORPOR	8783	FPWRT	PWRT_64	POR Timer Value	64ms
			BODENV	BORV45	Brown Out Voltage	4.5V
			BOREN	FBOR_ON	PBOR Enable	Enabled
			LPOL	PWMxL_ACT_HI	Low-side PWM Output Polarity	Active High
			HPOL	PWMxH_ACT_HI	High-side PWM Output Polarity	Active High
			PWMPIN	RST_IOPIN	PWM Output Pin Reset	Control with PORT/TRIS regs
			MCLR_E	MCLR_EN	Master Clear Enable	Enabled
F80006	FBS	310F	BNRP	WR_PROTECT_BOOT_OFF	Boot Segment Program Memory Write Protect	Boot Segment Program Memory may be written
			BSS	NO_BOOT_CODE	Boot Segment Program Flash Memory Code Protection	No Boot Segment
			EBS	NO_BOOT_EEPROM	Boot Segment Data EEPROM Protection	No Boot EEPROM
			RBS	NO_BOOT_RAM	Boot Segment Data RAM Protection	No Boot RAM
F80008	FSS	330F	SWRP	WR_PROT_SEC_OFF	Secure Segment Program Write Protect	Disabled
			SSS	NO_SEC_CODE	Secure Segment Program Flash Memory Code Protection	No Secure Segment
			ESS	NO_SEC_EEPROM	Secure Segment Data EEPROM Protection	No Segment Data EEPROM
			RSS	NO_SEC_RAM	Secure Segment Data RAM Protection	No Secure RAM
F8000A	FGS	0007	GWRP	GWRP_OFF	General Code Segment Write Protect	Disabled
			GCP	GSS_OFF	General Segment Code Protection	Disabled
F8000C	FICD	C003	ICS	ICS_FGD	Comm Channel Select	Use PGC/EMUC and PGD/EMUD

Memory Configuration Bits